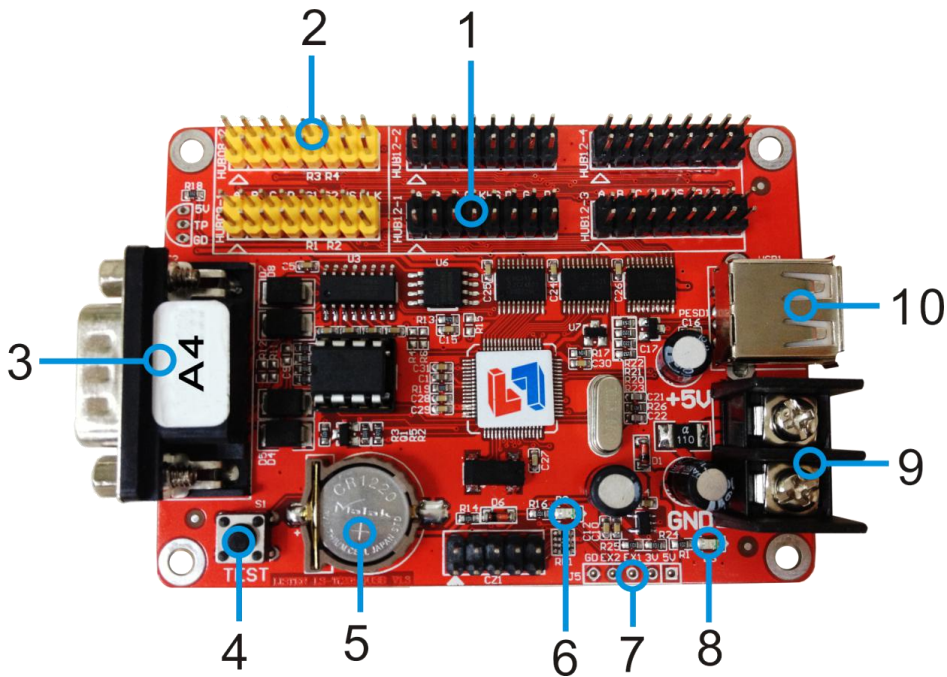


Specification for A4 LED Display Controllers

Version	Date	Reason
V2.00	2015/08/07	创建文档

Hardware:



Number	Interface Name	Description
1	HUB12 Port	Connect HUB12 module
2	HUB08 Port	Connect HUB08 module
3	DB9 port	DB9 serial port
4	Multifunction button	Can support : 1.Test LED panel 2.Restore factory settings
5	RTC Button battery	RTC Power , Voltage 3V
6	Status indicator	Indicating working state
7	Sensor port	Connect TEMP sensor
8	5V Power indicator	Indicating power state
9	5V Power Port	Wide voltage input 3.5V-6V
10	USB Port	U Disk upgrade port

Parameter:

Memory	2MByte
Adaptation	Single color,Double color
Pixels	Single:32K;Double:16K
Range	Single:2048*16 1024*32 672*48 512*64 Double:1024*16 512*32 336*48 256*64
Function	Multi area display/Multi language version
Program NO.	Support 128 program,Each program 16 zones
Area type	Text/Image/Animation/Time/Analog clock/Timer/Temperature
Frame mode	Program Water frame/Area Water frame
Clock	Digital clock/Analog clock/Countup/Countdown
Communication	RS232 and USB port;Customizable RS485
Display Port	2 *HUB08 port,4* HUB12 port
Sensor	Temperature Sensor
Brightness	16 Level brightness,Automatically adjust the period of time
Remote	Support Timing Switch/Software Switch
Voltage	3.5V~6V
Max Power	<1W
Temperature	-40℃-85℃
Developent	DLL
Software	LED Player 6.0

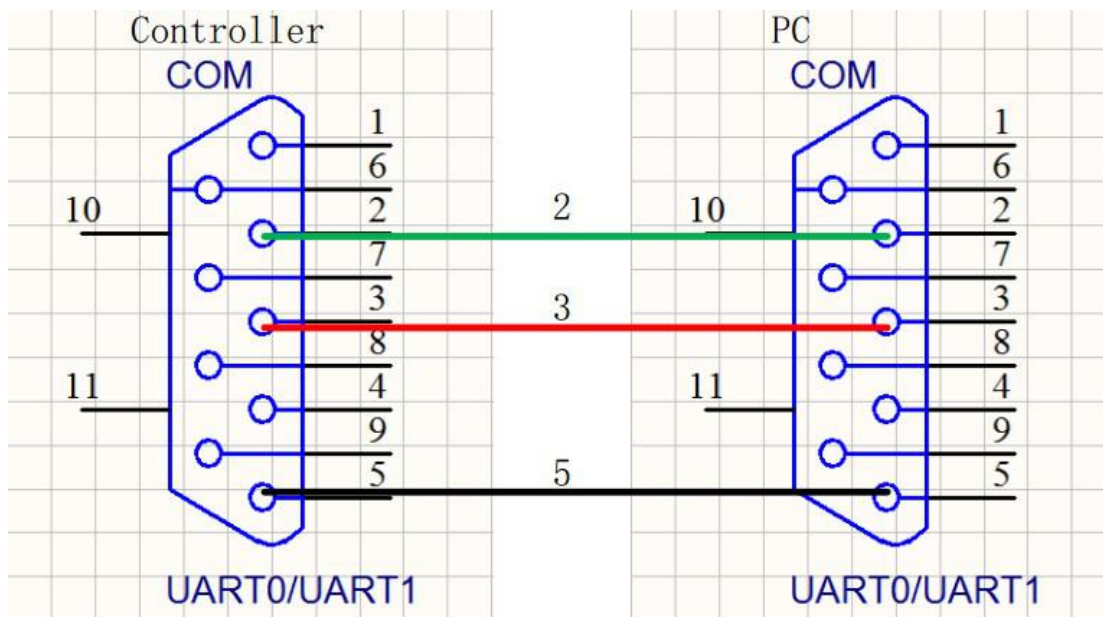
Serial Interface Description:

Controller using serial port is the DB9 interface , the pin definition as follows :

Pin number	Pin Names	Description
2	TXD	RS232 Send
3	RXD	RS232 Receive
5	GND	Power ground
7	DATA+	RS485 D+
8	DATA-	RS485 D-

Note: other pin is empty, do not use. 232 communication using 232 serial through line.

Controller support 232 and 485 communication. 232 communication using 232 serial through line. the connection mode is:



Dimensional drawing:

